

# DIRECT INTERIOR SOLUTIONS



- Commercial Joinery
- Cladding & Panels
- Joinery Manufacture
- Partitions & Ceilings

[www.directinteriorsolutions.com](http://www.directinteriorsolutions.com)



# CIVIL WORKS

DIS have worked on various projects throughout the country including Local Authority, Public Sector and MOD works. Our employees are all DBS checked and security cleared for work on public service buildings.

DIS is 'BM Trada Q-Mark' qualified for the safe installation and inspection of fire doors and fire stopping services and our Company is both 'Constructionline Silver' and 'CHAS Premium Plus' accredited.

DIS worked on the Ardley Energy from Waste project in Oxfordshire, constructed by Clugston Construction and CNIM. DIS undertook all internal joinery within the state-of-the-art administration and visitor centre. With oak as the primary finish, we supplied and installed all internal timber products, including fitting out of kitchens and changing rooms, together with the manufacture and installation of acoustic and fire rated timber screens within the facility.

We carried out similar works at the new MBT (Mechanical Biological Treatment) facility situated in Basildon, Essex as part of a joint venture between Balfour Beatty and Urbaser.

At a number of MOD properties undergoing refit or new build activities, we have been responsible for roofing works, joinery, doors & ironmongery, IPS and cubicles. Our work included the fitting out of canteens, changing rooms and various work shops. We manufactured and installed acoustic and fire rated timber screens within a number of facilities. We helped design, manufacture and fix bespoke architectural features such as the light beams below, in a MOD canteen.



Below: RAF Marham



T: +44 (0)1757 289 600

E: [info@directinteriorsolutions.com](mailto:info@directinteriorsolutions.com)

E: [info@thedisgroup.com](mailto:info@thedisgroup.com)





# CLADDING & FACADES

DIS is an accredited member of the Timber Decking and Cladding Association for the approved installation and supply of timber claddings. DIS is BM-Trada Q-Mark qualified; allowing us to offer a far greater and flexible service to our clients with regards fire stopping services, fire door installation, inspection and maintenance.

We have completed work on various prestigious projects working with a variety of different materials; specialising in fire rated timber cladding and internal facades. In addition we have also provided internal acoustic panels for both wall and ceilings on various projects.

Our expertise and skill set with regard cladding, facades and acoustic panels has been used by major UK contractors on refit and new build projects such as; hospitals, universities, schools, office buildings, retail outlets and industrial sites.

We are able to assist with the specification, design, material sourcing, build and fixing for any project where cladding, facades and acoustic panelling is required.



Above: York St.John University



Above: Wolfson Centre - Bradford Royal Infirmary



Above: Acoustic ceiling panels - Warwick University



Above: Lincoln Court - York City Council

T: +44 (0)1757 289 600

E: [info@directinteriorsolutions.com](mailto:info@directinteriorsolutions.com)

E: [info@thedisgroup.com](mailto:info@thedisgroup.com)





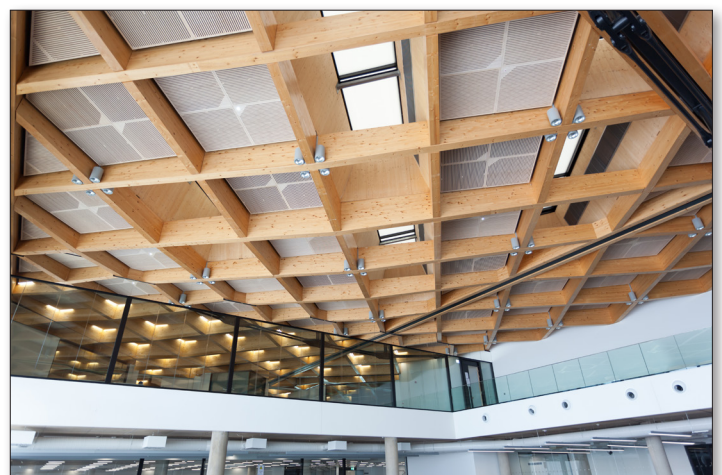
# EDUCATION

DIS are recognised specialists in the education sector, undertaking an extensive portfolio for both new build and refurbishment projects throughout the UK, with multiple projects completed in the North-East, Yorkshire, the Midlands and the East of England.

Some of our most recent work in the education sector was carried out at Baysgarth School in North Lincolnshire, Oakfield School in Hull, Warwick University - National Automotive Innovation Centre and Sheffield University Student Hub.

From universities in Sheffield, Warwick and York, to direct works for local secondary and primary schools, DIS have the experience, expertise and capacity to carry out a wide range of work, including Joinery, IPS, Cladding, Partitioning, Suspended Ceilings and Fitting Out.

DIS personnel are 'DBS' checked.



Above: **Baysgarth School** - North Lincolnshire  
Centre: **Baysgarth School** - North Lincolnshire  
Below: **National Automotive Innovation Centre** - Warwick University  
Left: **York St. John University**

T: +44 (0)1757 289 600

E: [info@directinteriorsolutions.com](mailto:info@directinteriorsolutions.com)

E: [info@thedisgroup.com](mailto:info@thedisgroup.com)





# HEALTH

DIS have been contracted by leading UK construction firms and local authorities to fulfil a range of joinery services on a number of high profile projects in Health related projects.

Some of our most recent work for Sewell Construction took place on the Wolfson Centre for Applied Health Research at Bradford Royal Infirmary. We undertook the supply, manufacture and fitting of the internal ash panelling along with the design and build of the ash handrail to the main entrance staircase.

We fitted all internal joinery including; doors and door-sets, interior windows, light well surrounds, architraves and skirting and all ironmongery.

We have recently undertaken work on Lincoln Court an independent living community housing development for York City Council.

We supplied and fitted all the new internal timber work to both the old and new buildings. This included all internal fire doors and sets, new kitchens. We also supplied and fitted the external cladding to the new build on the site.



Above: Wolfson Centre for Applied Health Research



Above: Lincoln Court - New Build - Cladding - York  
Left: Lincoln Court - Interior works - York

T: +44 (0)1757 289 600

E: info@directinteriorsolutions.com

E: info@thedisgroup.com





# MANUFACTURE

At DIS our team of qualified and experienced tradesmen are able to produce bespoke joinery items specific to your requirements such as: Internal glazed screens, door-sets and IPS Systems.

We can design and build bespoke items for functional or decorative requirements within our large workshop.

From concept to completion, we are able to provide efficient, practical solutions to all problems.

With our reputation for quality and an eye for detail, we'll provide you with a first class service.

Whether it's a new display window, a refurbishment of your existing property, or a new build, we can supply all necessary materials to create what is required to satisfy your properties requirements and specifications.



Above: Euro Auctions UK – Eggborough compound main entrance reception desk

Above: DIS Workshop - Howden

Centre: DIS Workshop - Howden

Bottom: UK Govt department - bespoke manufacture & Installation of decorative ceiling beams with integrated lighting.

T: +44 (0)1757 289 600

E: [info@directinteriorsolutions.com](mailto:info@directinteriorsolutions.com)

E: [info@thedisgroup.com](mailto:info@thedisgroup.com)





# RETAIL

DIS provide a comprehensive range of services within retail, following many years' of working within this fast paced sector.

Providing general Joinery; fitting of Fire Rated Doors and Door sets; Partitioning; Suspended Ceiling; Tiling; Shop-fitting, Kitchen and Wash-room fitting out.

We can undertake multiple trades directly, greatly increasing efficiency and aiding co-ordination on projects often associated with quick turnaround, yet still demanding a high quality product.

In previous years we have worked on multiple projects for the Arcadia Group throughout the UK, within their Topshop and Dorothy Perkins brands. We have also been involved with work for 'Lloyds Banking Group', as part of their ongoing refurbishment programme, transforming the traditional branch into modern screen-less facilities.

With the quality of the brand reflected in the quality of the environment it occupies, DIS know that delivering excellence first time round provides design consultants, main contractors and their clients with the standard of service they all appreciate.



Above & Left: Arcadia Group - Shop fitting



Above & Left: Lloyds Banking Group - refits

T: +44 (0)1757 289 600

E: info@directinteriorsolutions.com

E: info@thedisgroup.com

